



Artificial Lift Services

www.Q2als.com

Q2-PLUNGERS

Our Q2-Plungers are designed to latest edition of API Specification 11AX. Q2-Plungers are engineered for optimum performance and longer life in severe well conditions. We offer plungers in pin end or box end threads for regular/spray metal coated. Plungers can also be supplied with Monel pin ends or electro less nickel plated threads and/or bore to improve performance in extreme corrosive conditions.

PRODUCTS

Q2-Spray Plunger

Q2-Spray Plungers are made from heavy wall 1026 Carbon steel tube and spray metal coated with a nickel based coating applied to the outer diameter. This provides excellent wear and corrosion resistance with hardness typically exceeding 60 HRC. For increased wear resistance, an upgraded Tungsten carbide spray metal is available with a hardness typically exceeding 62 HRC. A precision ground seal surface and CNC machined pin threads complete this one piece plunger designed for severely abrasive and moderately corrosive conditions.

Q2-Monel Pin Plunger

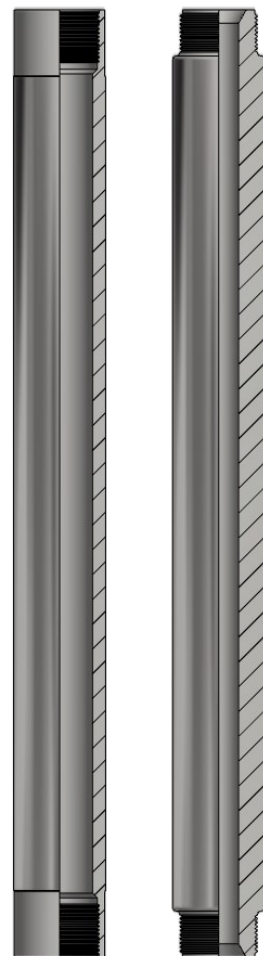
Q2-Monel Pin Plungers are similar to Q2-Spray Plungers but assembled with a Monel pin on each end. In severe corrosive conditions, regular pin causes pin to break or develop corrosive holes. This corrosion resistant material Monel pin extensions, provide a complete coverage in severe corrosive and abrasive conditions.

Q2-Nickel Plated Plunger

Q2-Nickel Plated Plungers are similar to Q2-Spray Plunger but with electro less nickel plated threads and/or bore to improve performance in extreme corrosive conditions.

Q2-Grooved Plunger

Q2-Grooved Plungers are shallow grooved spaced on outside of the plunger. It is available on all the above plungers. The grooves in the plunger helps to prevent sand, and scale from being trapped between the plunger and barrel. This plunger maximizes the pump efficiency, and extends the run time of the well.



Q2-SPRAY
BOX-END

Q2-SPRAY
PIN-END

SPECIFICATIONS

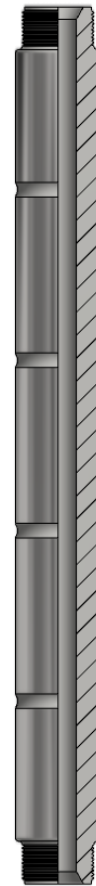
- Plunger is spray metal coated with nickel or tungsten carbide.
- Minimum thickness of finish spray metal is 0.010 in per side.
- Available in box end and pin end designs.
- Available in 0 to -10 fit size.
- Available in plain or grooved outside surface.

Plunger, Box End, Metal Sprayed

Pump Bore (in.)	Part Number	Thread Size	API Number
1-1/4	100DC(L)-F	1.0000-14	
1-3/4	100HC(L)-F	1.5084-14	P23-175
2	100KC(L)-F	1.7330-14	-
2-1/4	100MC(L)-F	1.9864-14	P23-225
2-1/2	100NC(L)-F	2.1095-11 ½	-
2-3/4	100PC(L)-F	2.3755-11 ½	P23-275
3-1/4	100RC(L)-F	2.5625-11 ½	-
3-3/4	100TC(L)-F	3.3825-11 ½	P23-375
4-1/4	100ZC(L)-F	3.6875-11 ½	
4-3/4	100ZBC(L)-F	4.2500-10	-
5-1/2	100ZAC(L)-F	4.6250-8	-
5-3/4	100ZCC(L)-F	5.2500-10	
7-3/4	100ZFC(L)-F	7.6250-8	-

Plunger, Pin End, Metal Sprayed

Pump Bore (in.)	Part Number	Thread Size	API Number
1-1/16	102BC(L)-F	0.8750-14	P21-106
1-1/4	102DC(L)-F	1.0000-14	P21-125
1-1/2	102FC(L)-F	1.2500-14	P21-150
1-3/4	102HC(L)-F	1.4704-14	P21-175
1-25/32	102JC(L)-F	1.4704-14	-
2	102KC(L)-F	1.5604-14	P21-200
2-1/4	102MC(L)-F	1.8024-14	P21-225
2-1/2	102NC(L)-F	2.1095-11 ½	P21-250
2-3/4	102PC(L)-F	2.1095-11 ½	P21-275
3-1/4	102RC(L)-F	2.8000-11 ½	
3-3/4	102TC(L)-F	3.1715-11 ½	P21-375



Q2-SPRAY
GROOVED
PIN-END



Q2-SPRAY
MONEL
PIN-END



Q2-SPRAY
GROOVED
MONEL
PIN-END

C = Spray Metal Coating (Q = Nickel, W = Tungsten Carbide)

L = Length in feet, F = Clearance fit in thousands of an inch

Add suffix (-M) for Monel Pin, (-G) for Groove, (-M-G) for Monel Pin with Groove, (-EN) for Nickel Plated ID & Pins.

