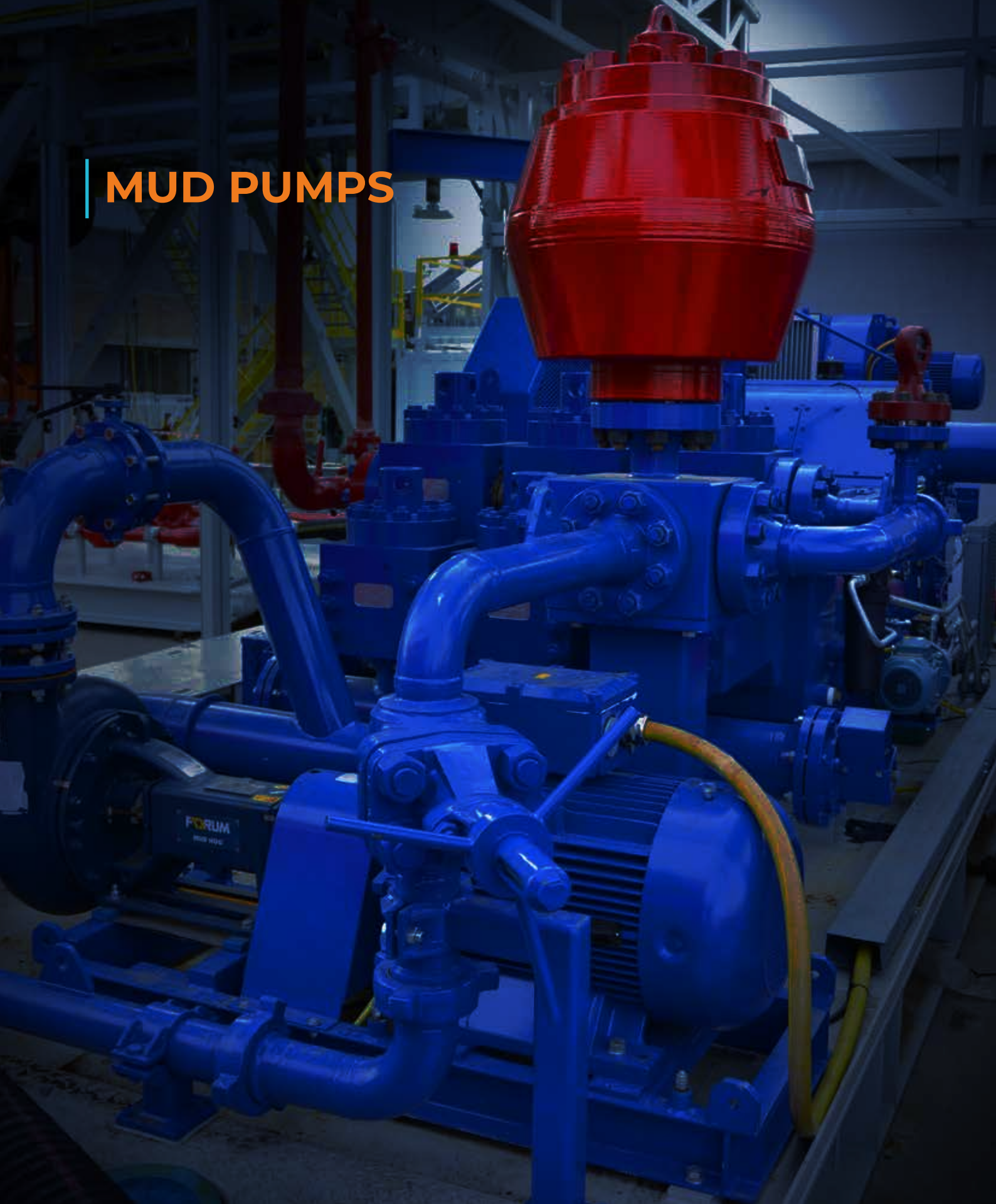


# MUD PUMPS





## MUD PUMPS

# Small footprint, reduced weights and different configurations to match any rig type

Mud pumps are akin to the heart, they are key equipment in oil and gas drilling that pumps and circulates the drilling mud. As a key player in the manufacture and sales of oilfield equipment, we have a complete range of triplex mud pumps with compact design, reduced carbon emission, and improved performance.

Our classes of onshore and offshore mud pumps range from 450 to 2,200 hp diesel or electric (AC or DC) powered with 3000 to 5000 psi ratings. We design our mud pumps to match different rig types, work optimally and safely both onshore and offshore.

## Belt and Chain Transmission Series

This series features robust pumps designed to deliver the highest HSE standards and performance.

- Linear Range of between 114 mm to 184 mm (4 ½ -9 ¼ inches)
- Stroke range of 305 mm (12 inches)
- Maximum pressure of 517 bar (7,500 PSI)
- Maximum volume delivery of 771 gpm (2,922 l/min)
- Ratings range of 1,194 kW (1,600 hp)
- A maximum speed of 120 spm

## Gear-Driven Series

This series features low noise and low vibrations, high reliability, and a massive 25% reduction in weight.

- Linear Range of between 114 mm to 229 mm (4-9 inches)
- Stroke range of between 178 mm to 355.5 mm (7 to 14 inches)
- Maximum pressure range of between 207 bar to 517 bar (3,000 to 7,500 PSI)
- Maximum volume delivery range of between 323 gpm to 1,272 gpm (1,226 to 4,815 l/min)
- Rating range of between 336 kW to 1,640 kW (450 to 2,200 hp)
- Maximum speed range of between 110 spm to 150 spm





## Drilling Advantages



### ENHANCED PERFORMANCE

Our mud pumps design has reduced weight, fewer vibrations, and a low noise level emission with improved reliability plus reduced NPT.



### COMPACT DESIGN

We design our mud pumps to have a top or rear-mounted motor configurations making them more compact such that 3 pumps can fit in a space of 2 pumps. This compact design also reduces carbon footprint.



### P-QUIP SYSTEM

Integration of P-Quip system allows for easy and faster replacements of parts such as valves, rods, liners, and others thus reducing downtime while increasing high HSE standards.



### ADVANCED DIGITALIZATION

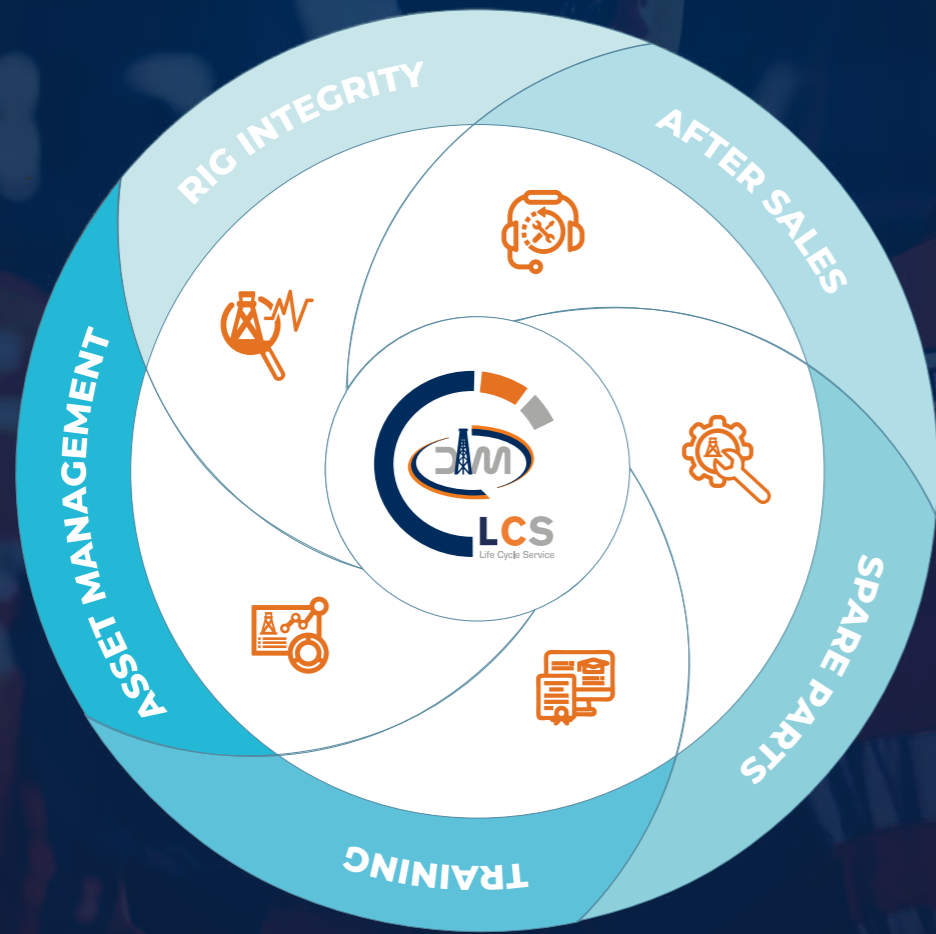
The integration of DEEP (Drillmec's Embedded Efficiency Platform) in our mud pumps design brings advanced technology and automation to the mud pump controls and operations.



# Services

Purchasing a Drillemec product entails choosing a brand that will be by your side throughout the life cycle of the rig package or drilling equipment provided. The worldwide presence of experienced and skillful team of field technicians, together with our 24/7 diagnostic center and our spare parts warehouses strategically

located around the globe guarantee a superior quality assistance. On top of this, our world class IWCF/IADC certified training center is available for in person or remote training for your drilling crew through cutting-edge simulators, with safety and performance in mind.



MUD PUMPS			7T450	7T5600	9T1000	9T1300	12T1600	14T2200		12T1600GD
Liner Range	mm	Belt & Chain Transmission	114 - 140	102 - 178	114 - 178	114 - 178	114 - 184	127 - 229	Gear Driven	114 - 184
	in		4 ½ - 5 ½	4 - 7	4 ½ - 7	4 ½ - 7	4 ½ - 7 ¼	5 - 9		4 ½ - 7 ¼
Stroke	mm		178	178	228	228	305	355,5		305
	in		7	7	9	9	12	14		12
Max Pressure	bar		207	345	345	345	345/517	517		517
	PSI		3,000	5,000	5,000	5,000	5,000/7,500	7,500		7,500
Max Delivery	l/min		1,226	1,986	2,554	2,554	2,554/2,922	4,815		2,922
	gpm		323	524	674	674	674 / 771	1,272		771
Rating	kW		336	447	745	970	1,194	1,640		1,194
	hp		450	600	1,000	1,370	1,600	2,200		1,600
Max Speed	Spm	150	150	150	-	120	110	120		





Innovation. Deep down.

ITALY | PIACENZA

USA | HOUSTON

INDIA | HYDERABAD

[drillmec.com](http://drillmec.com)